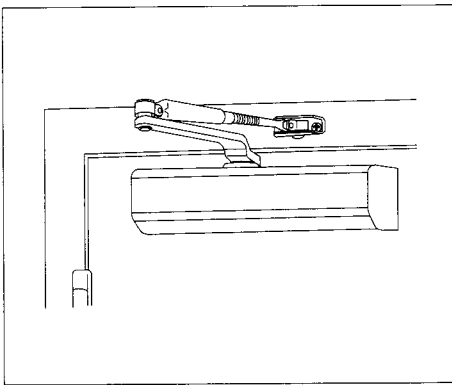


DC50 SERIES DOOR CLOSER

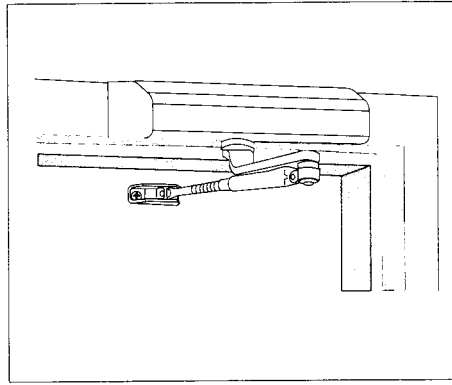
Installation Instructions

Grade 1, Meets ANSI A156.4

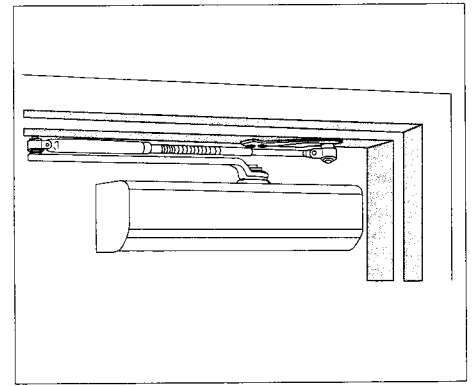
Installation Selection:



Regular Arm(Pull Side)



Top Jamb(Push Side)



Parallel Arm(Push Side)

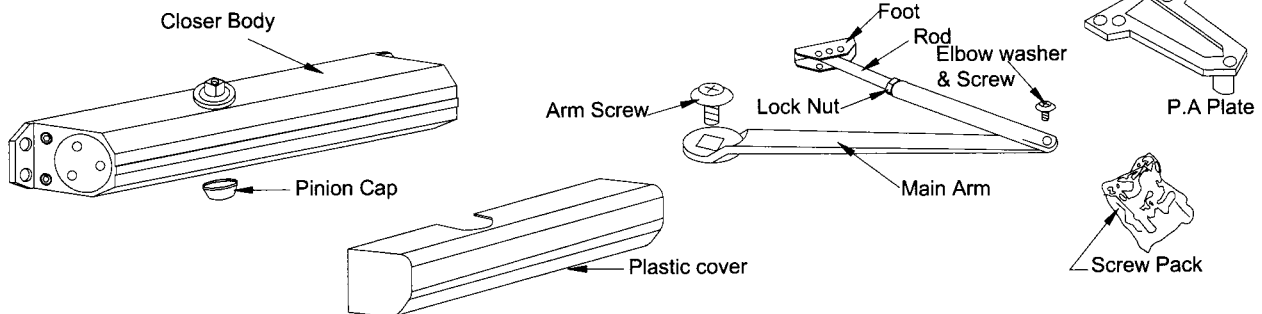


Caution

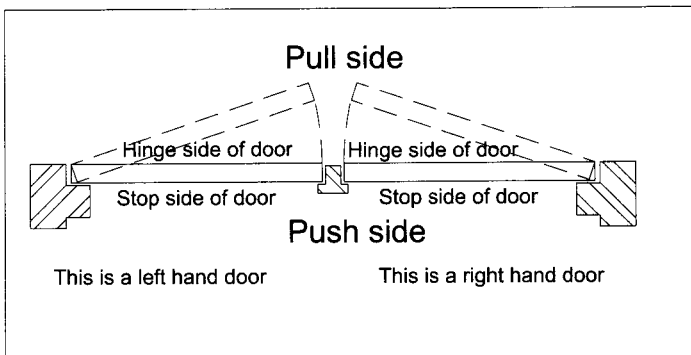
Please read this installation instruction carefully before installation

We won't be responsible for any results which are caused by improper installation.

Components parts



How to tell the hand of a door.



Spring power setting & door width

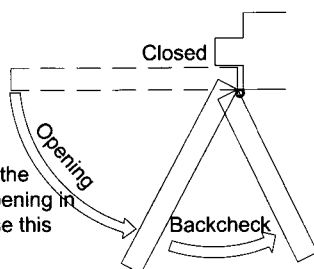
Regular & Top Jamb Installation				Parallel Arm Installation			
Maximum Size of Door Width (Factory Preset as size 3)							
Size	Interior	Exterior Inswing	Exterior Outswing	Size	Interior	Exterior Outswing	Full 360° Turns
1	28"	—	—	1	—	—	8 Turns C.C.W
2	36"	—	—	2	30"	—	5 Turns C.C.W
3	42"	30"	36"	3	36"	30"	0 Turns
4	48"	36"	42"	4	42"	36"	6 Turns C.W

C.W-Clockwise
C.C.W-Counter-Clockwise

Door opening control

Caution: Do not back valves out of closer or a leak will result.

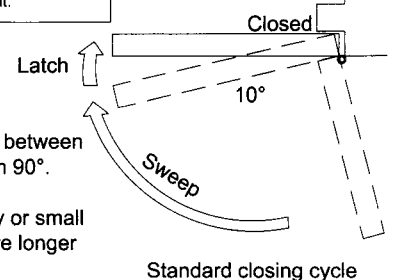
ATTENTION: Backcheck(BC) valve controls the hydraulic resistance to door opening in backcheck range. NEVER close this valve completely. It is not to provide a positive stop.



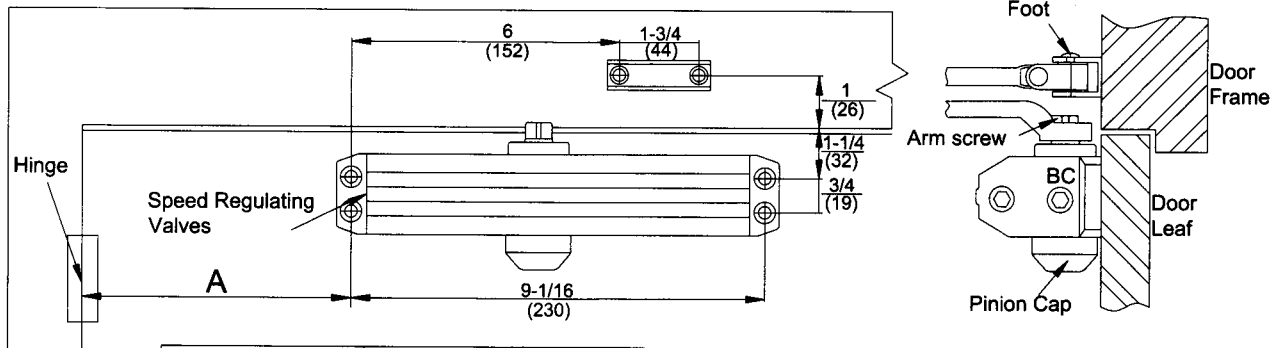
Door closing control

Caution: Do not back valves out of closer or a leak will result.

ATTENTION: Adjust closing time between 4 to 6 seconds from 90°. USE of the door by handicapped, elderly or small children may require longer closing time.



REGULAR ARM (PULL SIDE)

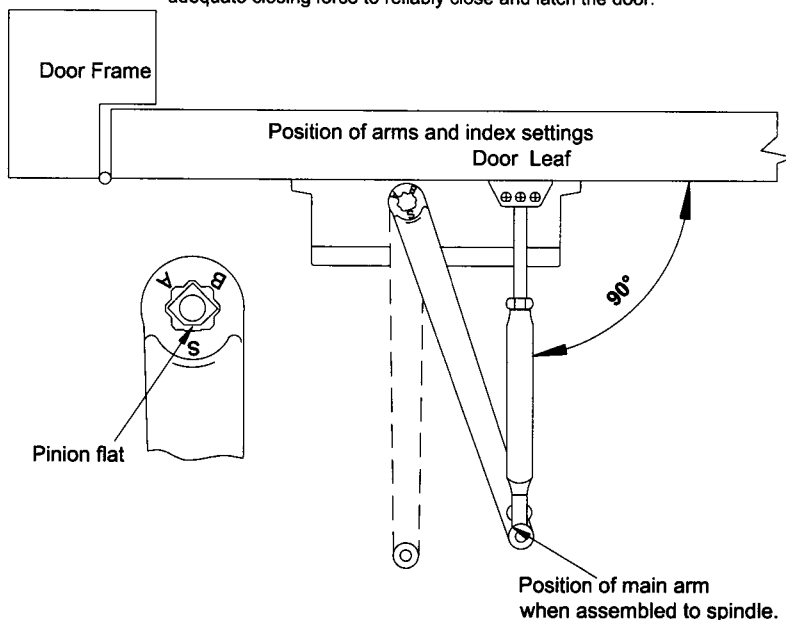


Dimension "A"		Opening Angle	
Inch	mm		
7	178	TO 100°	
6	152	*101° TO 120°	♿
3-1/2	89	*OVER 120°	

* Recommended mounting for meeting ADA compliance
 * When door closer is installed and adjusted to conform to ADA reduced opening force requirements (5 lbs max.), it may not have adequate closing force to reliably close and latch the door.

Right hand door illustrated
 Same dimensions apply to left hand door.
 Measured from hinge center.

Dimensions are in inches
 (mm)
 Not To Scale

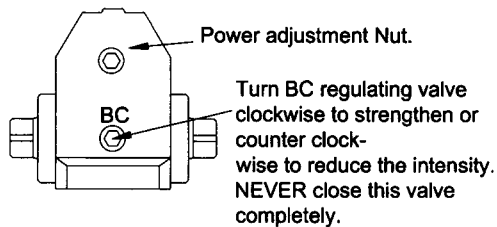


INSTALLATION STEPS:

1. Select opening degree of the door. USE dimensions as shown to drill mounting holes on door leaf and frame.
2. Assemble main arm to closer pinion spindle.
3. Attach the closer body to door leaf with speed regulating valves toward hinge.
4. Attach the foot and rod to the door frame.
5. Adjust length of the forearm to position forearm at right angle to the door frame when connected to main arm at elbow. Use washer and screw provided to secure pivot connection. Tighten locknut on forearm.
6. Snap pinion cap over spindle at bottom of closer.
7. Adjust closer.

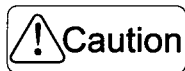
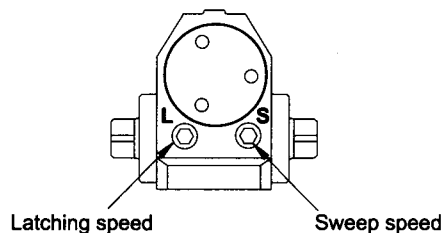
Power size and backcheck adjustment

Adjust the spring power as per chart on page 1. DO NOT exceed the maximum turns. The spring power has been preset at size 3 from factory. Turn this screw clockwise to increase or counter-clockwise to decrease power.



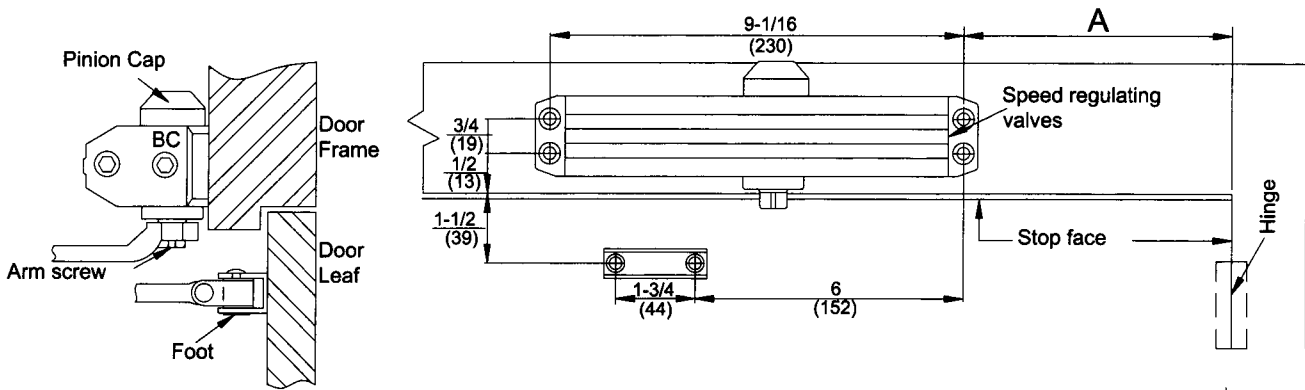
Sweep and Latching speed adjustment

Turn speed regulating valve clockwise to slow down or counter clockwise to speed up door movement.



Improper installation may result in personal injury or property damage.
 Follow all instructions carefully please.

TOP JAMB (PUSH SIDE)



Right hand door illustrated
same dimensions apply to left hand door.
Measured from hinge center.

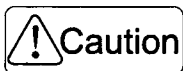
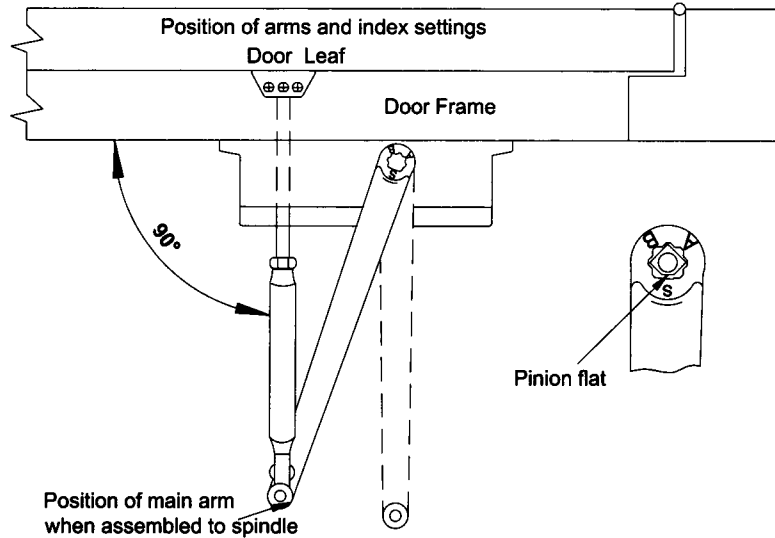
Dimensions are in inches
(mm)
Not To Scale

Dimension "A"		Opening Angle	
Inch	mm		
7	178	TO 100°	
6	152	*101° TO 120°	♿
3-1/2	89	*OVER 120°	

* Recommended mounting for meeting ADA compliance
* When door closer is installed and adjusted to conform to ADA
reduced opening force requirements (5 lbs max.), it may not have
adequate closing force to reliably close and latch the door.

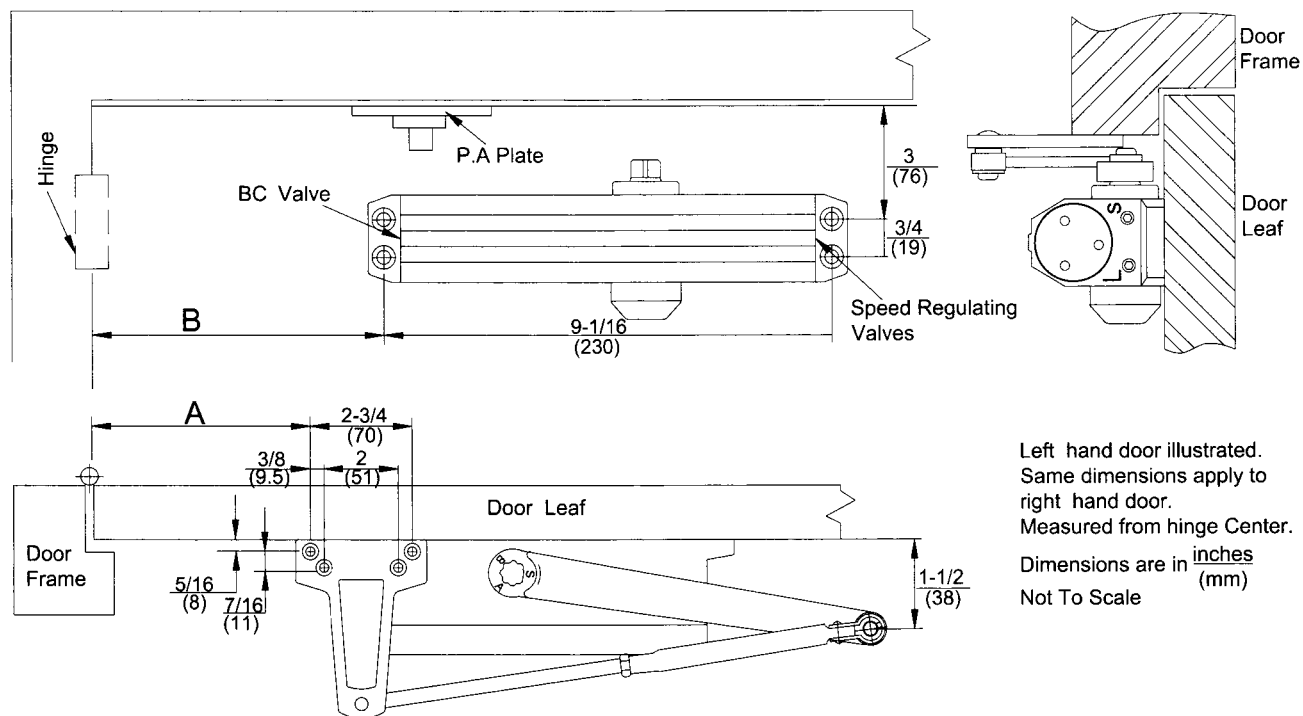
INSTALLATION STEPS:

1. Select opening degree of the door. USE dimensions as shown to drill mounting holes on door leaf and frame.
2. Assemble main arm to the closer spindle.
3. Attach the closer body to door frame with speed regulating valves toward the hinge.
4. Attach the foot and rod on the door leaf.
5. Adjust length of the forearm to position forearm at right angle to the door leaf when connected to main arm at elbow. Use washer and screw provided to secure pivot connection. Tighten locknut on forearm.
6. Snap pinion cap over spindle at bottom of the closer.
7. Adjust closer. (Same as Page 2)



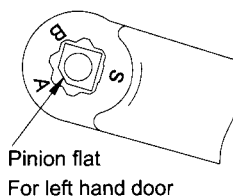
Improper installation may result in personal injury or property damage.
Follow all instructions carefully please.

PARALLEL ARM (PUSH SIDE)

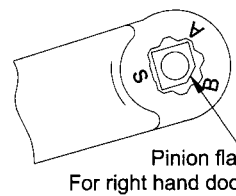


Dimension "A"		Dimension "B"		Opening Angle	
Inch	mm	Inch	mm		
9-1/4	235	7-5/8	194	TO 100°	
7-3/4	197	6-1/8	156	*101° TO 131°	♿
5-3/4	146	4-1/8	105	*OVER 131°	

* Recommended mounting for meeting ADA compliance
 * When door closer is installed and adjusted to conform to ADA reduced opening force requirements (5 lbs max.), it may not have adequate closing force to reliably close and latch the door.



Pinion flat
For left hand door



Pinion flat
For right hand door

INSTALLATION STEPS:

1. Select degree of door. Use dimensions shown in chart and illustration above to mark location of attaching screws on door and frame
2. Attach closer to door with speed regulating valves back to hinge.
3. Attach P.A plate to top frame as shown.
4. Remove foot from forearm and discard.
5. Install main arm on pinion shaft.
Rotate pinion 45° toward hinge edge of door to align main arm letter "B" (Right hand door) or "A"(Left hand door) with pinion flat. Fasten with arm screw.
6. Fasten forearm to P.A plate using screw removed from foot in step 4 and P.A shoe washer included in screw pack.
7. Adjust forearm length to set arm elbow about 1-1/2"(38mm) from door when connected to main arm. Use washer and screw provided to secure pivot connection. Tighten locknut.
8. Snap pinion cap over spindle at bottom.
9. Adjust closer. (See Page 2)



Improper installation may result in personal injury or property damage. Follow all instructions carefully please.