

# SimpleAccess® Locking Mechanisms

## Advanced Gate & Roll-up Door Lock

### High-Strength Durability

11,000 lb holding force, 300,000 cycles

### Indoor and Outdoor Environments

Weatherproof IP67 rating, Certified from -30°F to 167°F

### Heavy-Duty, Commercial-Grade Construction

18mm Stainless Steel Bolt Pin

Aluminum Strike Body

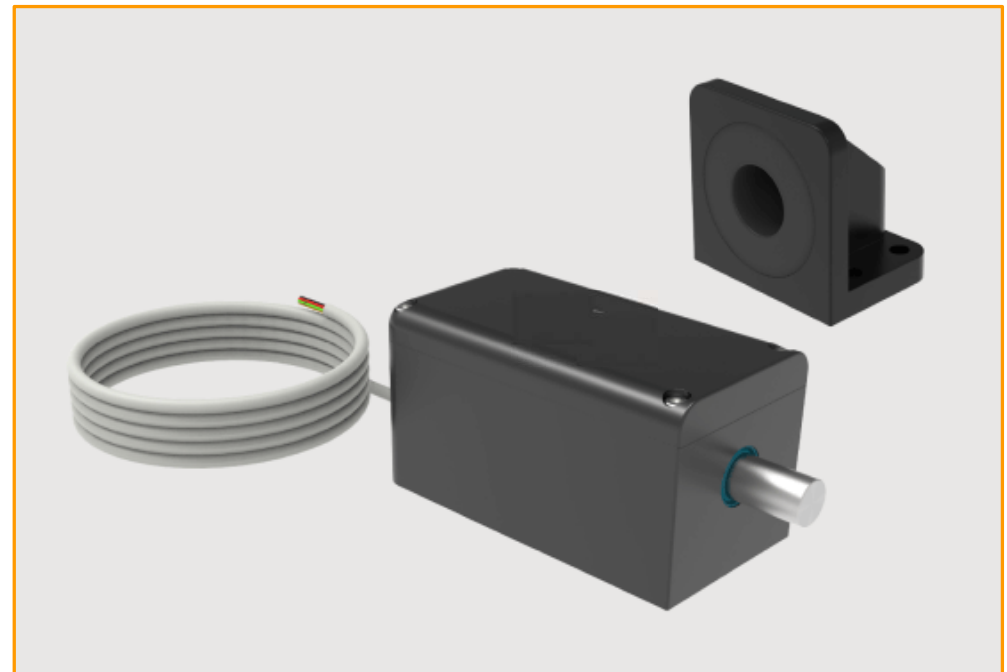
UV-Stabilized ABS Body, Hidden Mounting Bolts

### Energy-Efficient Operation

Low current consumption in standby & operation

### Versatile Mounting & Operation

Vertical or Horizontal Mount | Indoor or Outdoor



# SimpleAccess® Locking Mechanisms

## Advanced Gate & Roll-up Door Lock

### Dimensions

GL80: 5 29/32" x 3 3/16" x 3 3/16"

### Door Gap

15mm maximum (19/32")

### Holding Force

11,000 lb holding force

### Endurance

300,000 Cycles

240 hours Salt Spray

### Bolt Pin

1 3/16" extension, 11/16" diameter

### Electrical

Input voltage: 12–24VDC (auto-sensing)

Standby: 50mA@12VDC, 40mA@24VDC

Operation Peak: 1.0A@12VDC, 0.5A@24VDC

Heater(24V only): 1.6A@24VDC, Max: 2.0A@24VDC

### Diagram

Not to scale, in millimeters (mm)

