

# Changing out 6500 Series Motor Chassis



### Existing 6500 Motor Chassis

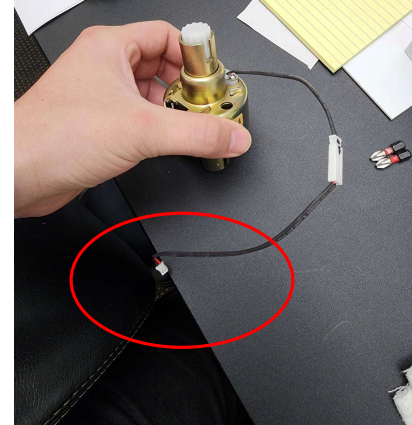
- Black plug



### New 6500 Motor Chassis

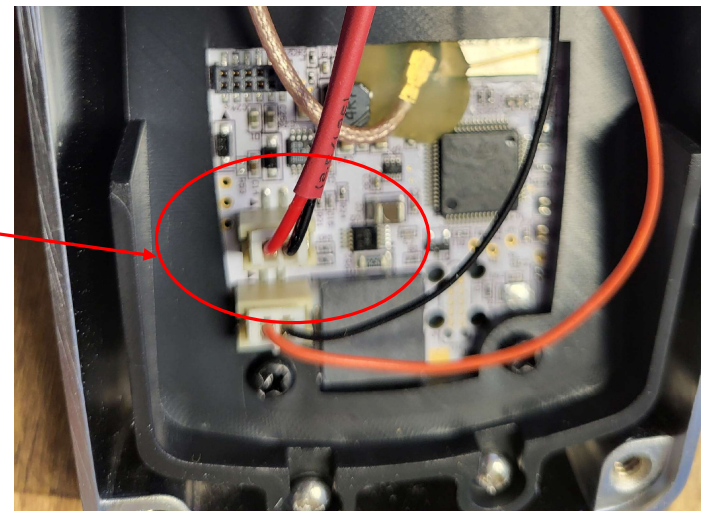
- New white end male connector connected to motor
- Additional New PCB Wire included in bag
  - Small end: replaces the wire that connects into the PCB board (***do this first***)
  - Female connector on additional wire connects with new white male end on the new motor

- New motor with additional wire attached, showing small plug at end that attaches to PCB board
- Note: New PCB wire should be attached to PCB board **first before attaching to new motor wire** (*photo to right is for illustration purposes only*)



### First – changeout PCB Board plug

- Additional wire in bag – small end replaces wire plugged into PCB
  - Carefully remove this wire and plug-in the new wire first
  - (leave larger female end disconnected until reassembly of the motor)



# Basic steps to changeout PCB wires

- Remove back of the lock to access PCB board
- Carefully remove existing pcb board cable
- Install new replacement pcb cable
- Reassemble back of the lock
- Reassemble entire lock with new motor
  - Attach new motor cable with the new pcb cable at this time